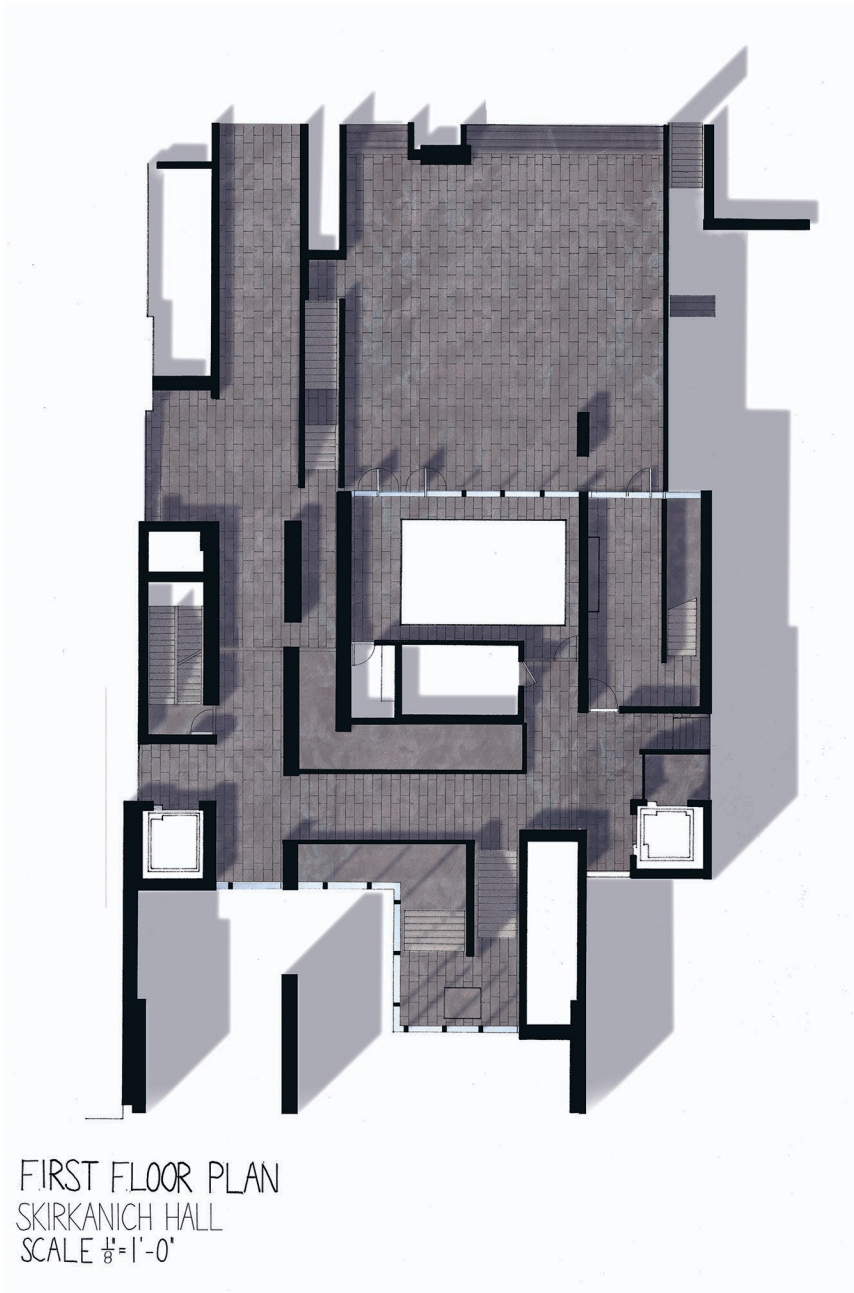
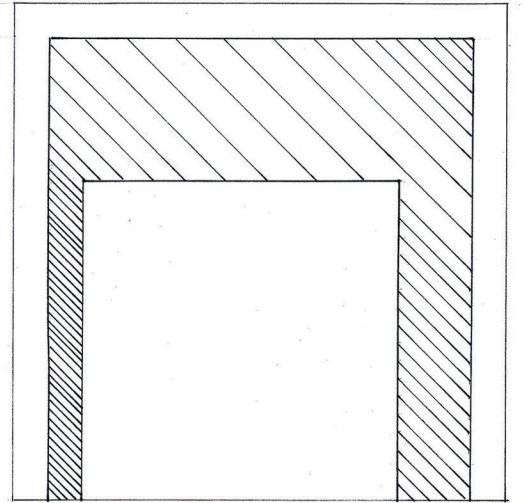


SKIRKANICH HALL STUDY

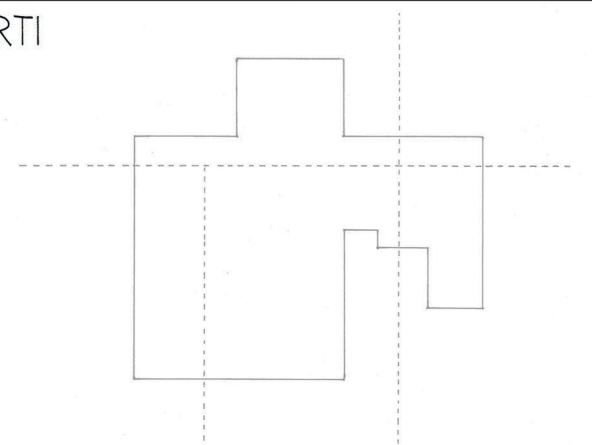


AT SKIRKANICH HALL, I NOTICED THAT A DOMINANT ASPECT OF THE DESIGN WAS THE USE OF TENSION AS A JOINT, ESPECIALLY WITH THE CEILING. DEPENDING ON WHAT IT WAS JOINING TO CONTROLLED THE STRENGTH OF TENSION. THIS CONTRIBUTES TO THE OVERALL CONCEPT OF CONNECTION THROUGH SKIRKANICH.

DIAGRAM



PARTI



MATERIAL SAMPLES

PREWEATHERED ZINC	
ACID ETCHED GLAZED GLASS	
SANDBLASTED GLASS	
GRANITE	
MANGANESE GLAZED BRICK	
BUSH HAMMERED CONCRETE	
STEEL	
YELLOW GLAZED GLASS	
CHERRY WOOD PANELS	

